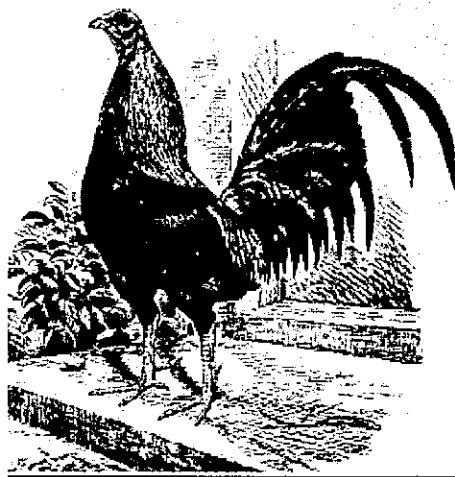


# Far North Coast All Game Club Incorporated

## *45<sup>th</sup> ANNUAL SHOW.*

To be held on Saturday 7<sup>th</sup> July 2012 in the Jim Muldoon Poultry Pavilion, Lismore Showgrounds.



---

**FEATURE BREED:      AUSTRALIAN PIT GAME – Large & Bantam**

---

Membership: \$10.00. Entry Fees: Members - \$1.00 per entry, Non-members \$1.50  
Full fees must accompany entries and all entries must be addressed:

Far North Coast All Game Club Inc. Show Entries  
PO Box 130 LENNOX HEAD NSW 2478

No late entries. No phone entries. Entries close on **Monday 27<sup>th</sup> June 2012.**  
All birds must be penned by 8.00 am on 2<sup>nd</sup> July 2011. Exhibitors may pen birds on the Friday evening between 6.00pm and 9.30 pm. Please advise on schedule if you wish to pen on Friday night. All entries are made subject to club's rules. The Club will not be held responsible for any loss or damage incurred. The use of judging sticks will not be allowed other than by the officiating judges.

---

<b>PRESIDENT:</b>	<b>MR. J. GIBSON - South Gundurimba</b>	<b>PH: 66290254</b>
<b>SHOW MANAGER:</b>	<b>MR W KLEPP - Brunswick Heads</b>	<b>PH: 66851260</b>
<b>SECRETARY:</b>	<b>MR S DUBBER - Lennox Heads</b>	<b>PH: 66876075</b>
<b>TREASURER:</b>	<b>MR D HOWARD - Alstonville</b>	<b>PH: 66283780</b>

---

**Show Day Sponsor**

***Kewpie Stockfeeds***



**Kewpie Stockfeeds**

***“Made to perform;  
Not for a price.”***

## **Officiating Judges:**

Brian Kennedy – NSW

### **FEATURE BREED - Australian Pit Game Large Fowl and Bantams**

Australian Game Large Fowl and Bantams

Mr Dennis Dowdle – QLD

Old English Game Large Fowl,

Indian Game, Malay Game and Any Other Variety Game, Large and Bantams and Junior Exhibitors' awards

Mr Keith Dubber – NSW

Old English Game Bantams and Modern Game Large and Bantams

---

## **JUNIOR EXHIBITORS!**

This is your chance to take on the open classes and still eligible for junior awards competing only against other junior exhibitors. Junior exhibits will also be eligible for major open class awards. In order to participate junior exhibitors must:

- Be aged 5 years to 16 years inclusive
- Not exhibit the same breed/colour/variety as an open exhibitor from the same family or residence.
- PEN THEIR OWN BIRDS
- Submit their entries as per open entries on the supplied entry form Clearly marked 'JUNIOR' with fees.

Entry fees will be \$1.00 per entry

---

The members of the Far North Coast All Game Club wish to express their sincere thank to all donors, both individuals and groups, who so generously continue to support the Club. Without this support the club could not possibly provide such events as this show for friends and fanciers to meet and enjoy fellowship while enjoying the beauty of our game fowls.

Particularly we thank the North Coast National Show Society for the availability of the exceptional show facilities. Also we encourage visitors and exhibitors to share with us by supporting the catering being run by the Modanville School P & C. On the day a barbeque will be operating with a wide variety of food and refreshments available.

## ***MAJOR AWARDS***

1	<b><u>Grand Champion Bird in Show</u> - Jack Gibson Memorial Trophy - Donated by John Gibson</b>	Trophy & tri colour Sash
2	<b><u>Reserve Champion Bird in Show</u> - 'Artie Essery Memorial' Trophy - Donated by Neil Hing</b>	Trophy & tri colour Sash
3	<b>Grand Champion Large Fowl</b>	Trophy & Sash
4	<b>Grand Champion Bantam</b>	Trophy & Sash
5	<b>Grand Champion Large Fowl - Opposite Sex</b>	Trophy & sash
6	<b>Grand Champion Bantam - Opposite Sex</b>	Trophy & sash
7	<b>Grand Champion Bantam - Opposite Sex</b>	Trophy & sash
8	<b>"Champion Australian Pit Game in Show"</b>	Trophy & tri colour Sash
9	<b>"Champion Australian Pit Game Cock in Show Large or Bantam"</b>	Commorative Medallion
10	<b>"Champion Australian Pit Game Hen in Show Large or Bantam"</b>	Commorative Medallion
11	<b>"Champion Australian Pit Game Cockerel in Show Large or Bantam"</b>	Commorative Medallion
12	<b>"Champion Australian Pit Game Pullet in Show Large or Bantam"</b>	Commorative Medallion
13	<b>Champion Pit Game Muff Large or Bantam - Ken Johns Memorial Sash donated by G Hopf</b>	Sash
14	<b>Champion Pit Game Henfeather Large or Bantam</b>	Sash
15	<b>Champion Exhibit by a Junior Exhibitor - donated by G Hopf</b>	Trophy & Satin Rosette
16	<b>Champion Large Fowl and Champion Bantam exhibitor by a Junior - Donated by G Hopf</b>	Sashes
17	<b>Champion Old English Game Large &amp; Champion Old English Game Bantam - Donated by OEG Fowl Club of Australia</b>	Sashes
18	<b>Champion OEG: Large - Classes 73 - 82 &amp; 83 - 134; Bantam - Classes 233 - 248 &amp; 249 - 300 - Donated by OEG Fowl Club of Australia</b>	Colour Certificates
19	<b>Ch Australian Game Lge or Btm Male - Donated by N.J Giggins</b>	Trophy
20	<b>Ch Australian Game Lge or Btm Female-Donated by N.J Giggins</b>	Trophy

## **Section Awards**

20	Champion Australian Game Large	\$20 cash & sash
21	Champion Australian Game Large - Opposite Sex	\$10 cash & sash
22	Champion Old English Game Large	\$20 cash & sash
23	Champion Old English Game Large - Opposite Sex	\$10 cash & sash
24	Champion Old English Game Large - Classes 73 - 82	sash
25	Champion Old English Game Large - Classes 83 - 130	sash
26	Champion Indian Game Game Large	\$20 cash & sash
27	Champion Indian Game Large - Opposite Sex	\$10 cash & sash
28	Champion Pit Game Large	\$20 cash & sash
29	Champion Pit Game Large - Opposite Sex	\$10 cash & sash
30	Champion Modern Game or Malay Game Large	\$10 cash & sash
31	Champion Malay Game Bantam or Any Other Variety Large or Bantam	\$10 cash & sash
31	Champion Australian Game Bantam	\$20 cash & sash
32	Champion Australian Game Bantam - Opposite Sex	\$10 cash & sash
33	Champion Old English Game Bantam	\$20 cash & sash
34	Champion Old English Game Bantam - Opposite Sex	\$10 cash & sash
35	Champion Old English Game Bantam - Classes 233 - 248	sash
36	Champion Old English Game Bantam - Classes 249 - 296	sash
37	Champion Indian Game Bantam	\$20 cash & sash
38	Champion Indian Game Bantam - Opposite Sex	\$10 cash & sash
39	Champion Pit Game Bantam	\$20 cash & sash
40	Champion Pit Game Bantam - Opposite Sex	\$10 cash & sash
41	Champion Modern Game Bantam	\$20 cash & sash
42	Champion Modern Game Bantam - Opposite Sex	\$10 cash & sash
43	Champion Breeding Pair Large	\$10 cash & sash
44	Champion Breeding Pair Bantam	\$10 cash & sash

## LARGE FOWL

## BREEDING PAIRS

Aust. Game	Black Red	1		O.E.G.	Pile	9	
Aust. Game	Duckwing	2		O.E.G.	A.O.C.	10	
Aust. Game	Pile	3		Aust. Pit	Heavy weight	11	
Aust. Game	A.O.C.	4		Aust. Pit	Light weight	12	
O.E.G.	Black Red	5		Indian	Dark	13	
O.E.G.	Brown Red	6		Indian	A.O.C.	14	
O.E.G.	Blue Red	7		Malay Game A.C.		15	
O.E.G.	Duckwing AC	8		Any Other Variety		16	

## SINGLE CLASSES

[illegible]

# **BANTAMS**

## **BREEDING PAIRS**

Modern Game	Black Red		151			O.E.G.	Pile		160		
Modern Game	Duckwing		152			O.E.G.	Spangle		161		
Modern Game	Pile		153			O.E.G.	A.O.C.		162		
Modern Game	A.O.C.		154			Aust. Pit	Any Variety		163		
O.E.G.	Black Red	DL	155			Indian	Dark		164		
O.E.G.	Black Red	LL	156			Indian	A.O.C.		165		
O.E.G.	Black/Blue		157			Aust Game	Blk Red		166		
O.E.G.	Blue Red		158			Aust Game	A.O.C.		167		
O.E.G.	Duckwing AC		159			Any Other Variety			168		

## **SINGLE CLASSES**

		Cock	Hen	Cockerel	Pullet			Cock	Hen	Cockerel	Pullet
Aust. Pit	Plain Face	169	170	171	172	O.E.G.	Blk Red D/L	233	234	235	236
Aust. Pit	Muff	173	174	175	176	O.E.G.	Blk Red L/L	237	238	239	240
Aust. Pit	Henfeather	177	178	179	180	O.E.G.	Blk Tail Wheaten		241		242
Modern Game	Black Red	181	182	183	184	O.E.G.	Blue Red	243	244	245	246
Modern Game	Duckwing	185	186	187	188	O.E.G.	Blue Tail Wheaten		247		248
Modern Game	Pile	189	190	191	192	O.E.G.	Blue	249	250	251	252
Modern Game	Wheaten	193	194	195	196	O.E.G.	Black	253	254	255	256
Modern Game	A.O.C.	197	198	199	200	O.E.G.	Brown Red or Dark Red	257	258	259	260
Aust. Game	Black Red	201	202	203	204	O.E.G.	Spangle	261	262	263	264
Aust. Game	Duckwing	205	206	207	208	O.E.G.	Crele	265	266	267	268
Aust. Game	Blue Red	209	210	211	212	O.E.G.	Duckwing AC DL	269	270	271	272
Aust. Game	A.O.C.	213	214	215	216	O.E.G.	Duckwing AC LL	273	274	275	276
Indian	Dark	217	218	219	220	O.E.G.	Ginger	277	278	279	280
Indian	Jubilee or Blue Laced	221	222	223	224	O.E.G.	Grey/Birchen	281	282	283	284
						O.E.G.	Brassy/Furness	285	286	287	288
Malay Game	Any Colour	225	226	227	228	O.E.G.	Pile D/L	289	290	291	292
						O.E.G.	Pile L/L	293	294	295	296
Any Other Variety		229	230	231	232	O.E.G.	Dunn AC	297	298	299	300
						O.E.G.	A.O.C.	301	302	303	304

Note: For birds in AC or AOC classes Please State Colour, where there are six or more exhibits per colour extra classes will be provided. In AOV state Breed

Note: For birds in AC & AOC classes, Please State Colour and where there are six or more exhibits per colour, extra classes will be provided. In AOV state Breed and and if there are six or more exhibits of a variety, extra classes will be provided.

PO Box 130 Lennox Head NSW 2478

## Far North Coast All Game Club

ENTRY FORM  
Secretary's Copy

PO Box 130 Lennox Head NSW 2478

# Far North Coast All Game Club

# ENTRY FORM

## Exhibitor's Copy

[illegible]

All Entries must be in duplicate together  
with full amount payable enclosed

Name: \_\_\_\_\_

Address: \_\_\_\_\_

---

Email: \_\_\_\_\_

---

Phone No. \_\_\_\_\_

Membership:

Entry Fee: \_\_\_\_\_

All Entries must be in duplicate together  
with full amount payable enclosed

Name: \_\_\_\_\_

Address: \_\_\_\_\_

Email: \_\_\_\_\_

Phone No. \_\_\_\_\_

Membership:

Entry Fee: \_\_\_\_\_